

MARINE BIO

Making Delicious Mineral Water

SOMELITE[®]

Water-Purifying Agents of Natural Coral Grains



Natural coral grains harvested from the beautiful ocean bottom off semi-tropical Okinawa produces mineral water.

Somelite[®] is a natural water-purifying agent that increases the effectiveness of water purifiers used in homes and industry.

Natural Coral Produces Mineral Water

The natural coral grains used in this product is harvested from the beautiful ocean off semi-tropical Okinawa. Also known as coral sand, this coral sand is composed primarily of the shells and skeletons of reef-building coral, and the Foraminifera, such as star sand, that inhabit the area. To form their shells and skeletons, these organisms ingest minerals - mainly calcium and magnesium - from the ocean. As a result, coral sand is constituted mainly (approximately 95%) of calcium carbonate. However, it also contains abundant amounts of many minerals-calcium,

magnesium, etc.-that people need to obtain from their daily meals in order to be healthy.

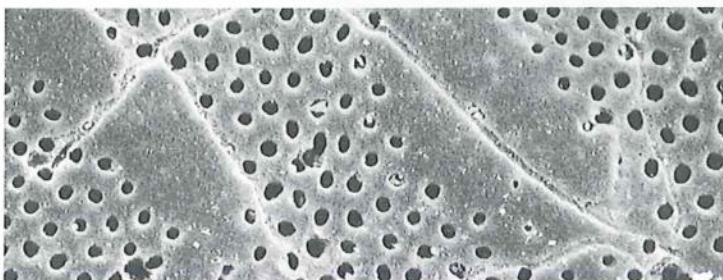
When coral sand is used as a water-purifying agent, its minerals flow into the water creating mineral water. At the same time, it turns acidic tap water to slightly alkaline and removes the bleach odor from it. Moreover, since coral sand is a porous substance with innumerable minute holes of 10 microns or less, it also removes foreign matter and more.



● Somelite BL (Standard)



● Somelite SL (Silver coated coral sand)



● Electron microscope photograph of Somelite surface

Somelite's Mineral Ingredient

Calcium	34.0%	Copper	69ppm
Magnesium	1.5%	Zinc	19ppm
Potassium	260ppm	Chromium	4ppm
Iron	580ppm	Manganese	10ppm
Iodine	20ppm	Selenium	0.01ppm

Features

- Diffuses calcium, magnesium, etc., into water.
- Adjusts pH.
- Removes residual chlorine, impurities, etc.
- Controls bacteria (silver-coated coral grains/ Somelite SL).

Specifications

- Bulk density : 1.0-1.2g/ml
- Loss on drying : 3% or less
- pH : 7- 8
- Standard grain size: 0.50-1.7mm
0.18-0.50mm
0.18-1.7mm

Uses

- As a water-purifying agent for drinking water used in the food industry.

Type of Packaging

- 20kg polyvinyl container in kraft 3-tiers bag

*This product's raw material, coral sand, is the skeletal fossil of reef-building coral that has become defunct.

*Somelite is patented in countries worldwide.

*Coral sand is authorized as a food additive by the Japanese Ministry of Health & Welfare

MARINE BIO

Marine Bio Co., Ltd.

Head Office: 2-7 Kandata-cho, Chiyoda-ku, Tokyo 101-0046 Japan
TEL: (03)3252-6351 FAX: (03)3252-6355

Nagano Office: 160-352 Tagiri, Iigima-machi, Kamiina-gun, Nagano 399-3701 Japan

Okinawa Office: 3-21 Kaiho-cho, Okinawa City, Okinawa 904-2162 Japan